

FIELD MULLING INSTRUCTIONS

Mulling – USA Comfort Tilt Double Hung - Multiple Units

Tools Required

- Hammer
- Rubber Mallet
- Staple Gun
- Caulking gun
- Silicone
- Pliers/ Channel Locks
- Clamps
- Miter Saw

Parts Included

- Jamb Extensions
- Drip Cap
- Mull Cover
- Interior Mull Cover
- Mending Plates

1. Remove the nailing fin on the side of the units where they will join by using pliers/channel locks
 - Place pliers/channel locks on the outer edge of nailing fin, grasping onto the nailing fin base (as shown in the first two images below)
 - Make sure the grip of the locks is tight against nailing fin
 - Bend the nailing fin back and forth until the nailing fin becomes loose from the frame
 - Break the nailing fin off of the frame

Before



After



2. Pull units together so the top and bottom of each unit are flush with each other
 - Clamp units together with clamps
3. Snip off inside corners of the nail fin (so that it does not interfere)

Before

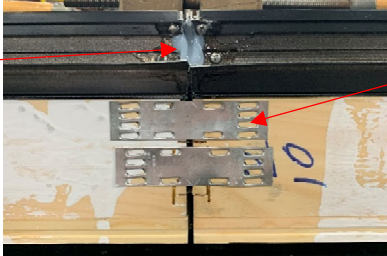


After



4. Attach the tops of the two units by hammering in two mending plates through the wood on the top side of the units

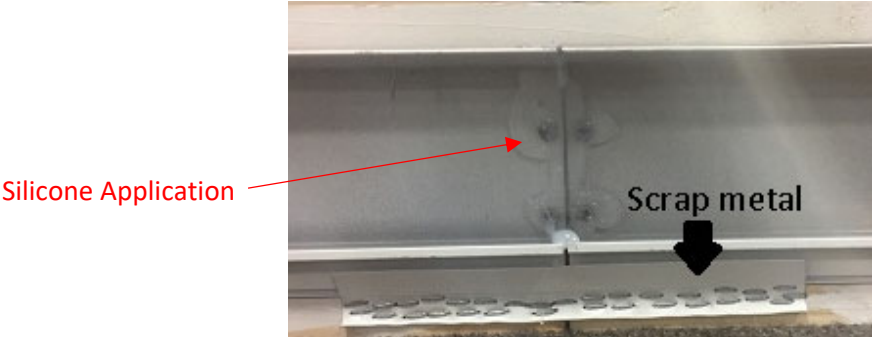
Silicone Application



Mending Plates

FIELD MULLING INSTRUCTIONS

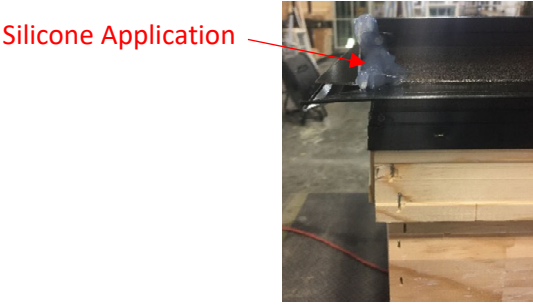
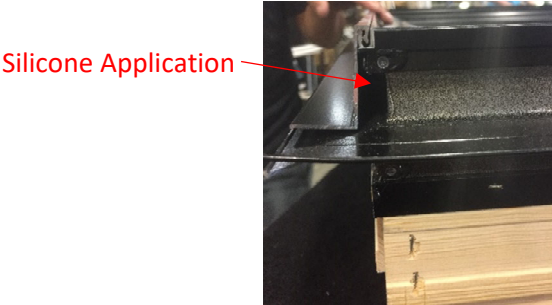
5. Staple bottoms of the joining units together with 7/16" x 5/8" staples and using metal strap



- 6. Silicone the gaps in the top and bottom of the joined units
- 7. Attach the drip cap in the groove at the top of the unit using the rubber mallet or a hammer with a block of wood
- 8. Apply silicone on the top of the unit in the gap between the drip cap and frame aluminum

Before

After



- 9. Flip unit so that the interior wood is facing up
- 10. Make interior mull cover even on both sides over the entire length
 - Pin nail need to be on edge of interior mull cover
 - Put in 1 1/4" pin nails
 - 2 in the top and 2 in the bottom, staggered every 18-24"

Before Interior Mull Cover

After Interior Mull

