

# FIELD MULLING INSTRUCTIONS

## USA Comfort Tilt Double Hung with USA Sash Set Transom

### Tools Required

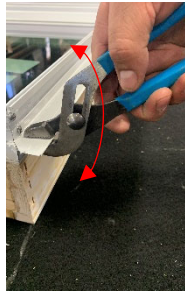
Hammer  
Rubber Mallet  
Staple Gun  
Caulking gun  
Silicone  
Pliers/Channel Locks  
Clamps  
Miter Saw

### Parts Included

Jamb Extensions  
Drip Cap  
Mull Cover  
Interior Mull Cover

1. Remove the nailing fin on the side of the units where they will join by using pliers/channel locks
  - Place pliers/channel locks on the outer edge of nailing fin, grasping onto the nailing fin base (as shown in the first two images below)
  - Make sure the grip of the locks is tight against nailing fin
  - Bend the nailing fin back and forth until the nailing fin becomes loose from the frame
  - Break the nailing fin off of the frame

Before

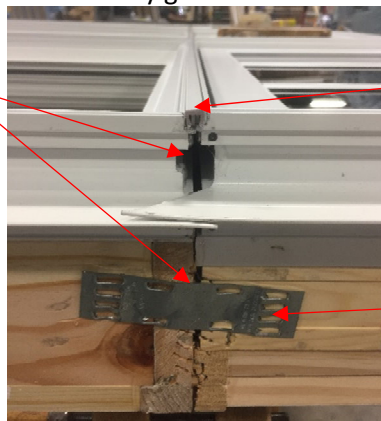


After



2. Pull units together so the two units are flush with each other on each side
  - Clamp units together with a clamp
3. Hammer one mending plate into the wood on each side of the joined units
4. Attach the zero mull in the accessory groove in between the units using a rubber mallet

Silicone Application



Zero Mull

Mending Plate

5. Apply silicone in the gap between the mullled units from the aluminum down the mending plate
6. Flip unit so that the interior is facing up

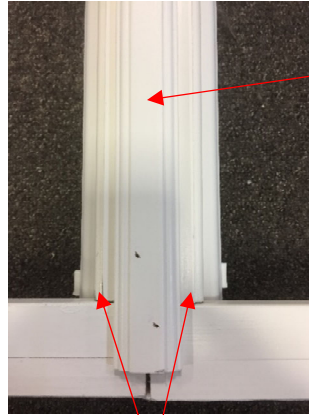
## FIELD MULLING INSTRUCTIONS

- Use  $\frac{1}{4}$ " x 1" staples to attach Interior Mull Cover
  - Make interior mull cover even throughout both side
  - Staple 2 in the top and 2 in the bottom, then every 18-24", alternating sides
  - Staples need to be on edge of the interior mull cover

Before Interior Mull



After Interior Mull



Interior Mull Cover

Even Spacing on both side  
of interior Mull Cover