

USA Swing Door Multipoint Gear Handing 5/2008 - present

Tools Needed

Flathead screwdriver
4 mm Allen



1. Use the 4 mm Allen wrench to release the top Multipoint strike

Strike in place



- Place the 4 mm Allen wrench in the hole on the backside of the housing
- Twist to the left until the strike is released



2. Flip the strike over and align it with the pin & screw on the housing

- Place the 4 mm Allen wrench into the hole on the backside of the housing
- Twist to the right until the strike is tightened



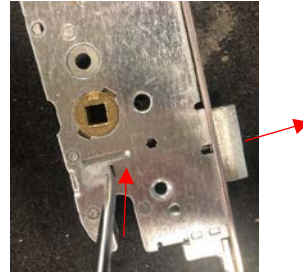
USA Swing Door Multipoint Gear Handing 5/2008 - present

3. Repeat steps one and two for the bottom multipoint strike
4. Use the flathead screwdriver to release the center strike

- Push the flathead screw driver into the slot on the side of the gear box (circled)



- Push down on the screw driver as you pull out on the strike until the strike is released



- Flip the strike over and slide it back in place(strike should snap in)

